

# Replacement Instruction on New Switch of SPOA10

In order to improve the user experience of our 2 post lift main switch, Rotary has designed new switch for SPOA10.

## ***Parts needed for replacing SPOA10 new switch***

For the lifts produced since March 2016, the new switch has been applied and packed along with entire lift.

For the lifts before March 2016, if the customer wants to replace to new switch, the lift will need extra components including new switch kit and additional wires. A correct serial number is necessary for checking the height where new switch can be placed and send right length wires.

SPOA10 new switch kit (Long code: 52.01.02.05. FA9147 kit) contains parts as below:

<b>PART NO.</b>	<b>DISCRIPTION</b>	<b>QTY</b>
FA9147	FA9147 3Ø Control Box	1
FA9153-1	Mounting Bracket	1
40375	5/16"-18NC x 1/2" SOC FH C'SUNK SCREW	1
40780	1/4" Flat Washer	4
40779	1/4" Star Washer	4
40062	1/4"-20NC x 1/2" HHCS	4
40217	5/16" Flat Washer	2
40401	5/16"-18NC x 1/2" HHCS	2

An additional 3.3m 2 cores wire will also be included in the package for connecting the proximity switch and new control box.



Fig 1: FA9147 3Ø Control Box



Fig 2: Mounting Bracket

# How to replace the new switch box

1. **Preparation:** Fix the new control box on the column of SPOA10 using the position of tool holder with mounting bracket. Red hole for mounting the bracket to SPOA10 column. Blue hole for mounting the new FA9147 control box to the bracket. Shown in Fig 3 as below.

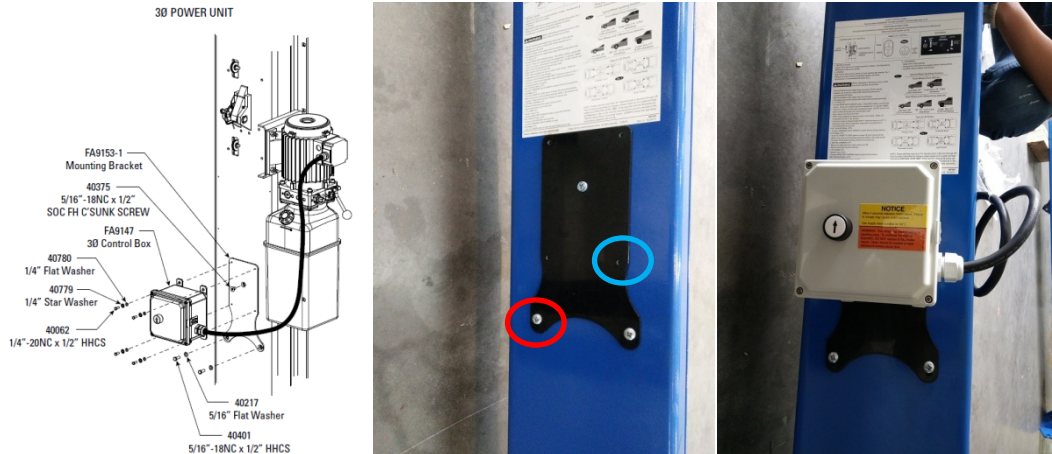


Fig 3: Mounting Bracket

2. **FA9147 3Ø control box connection:** One 4 cores wire has been connected to the control box whose other side will approach to the motor. One 2 cores wire (1,A1) need to be connected inside whose other side will extend to the limit switch. Customer need to prepare another 4 cores (L1,L2,L3,PE) as the power cord.

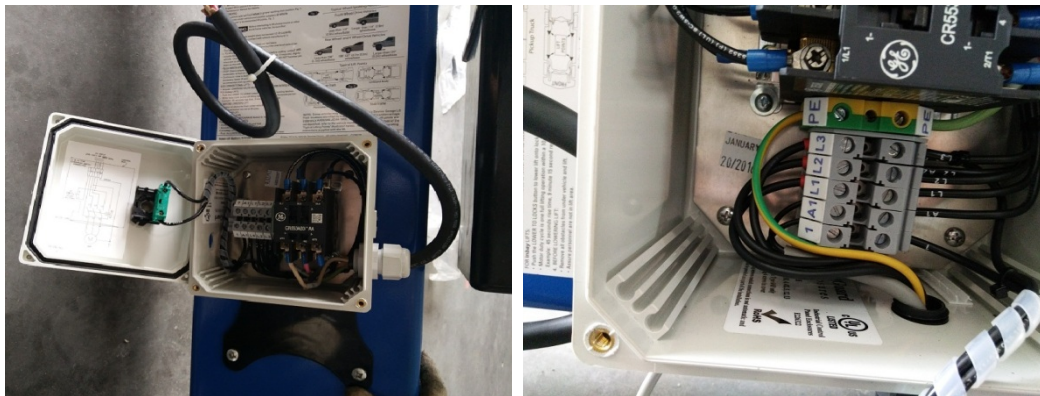


Fig 4: GB control box connection



Fig 5: Power Cord

3. **Motor Connection:** Open the cover of the drum switch on the motor of SPOA10 power unit. Disconnect the wires related. Connect the 4 cores wire which comes out from GB control box with the method shown in Fig 6. (The yellow-green line is the ground line and should be connected to the lead on the right side of the patching panel).

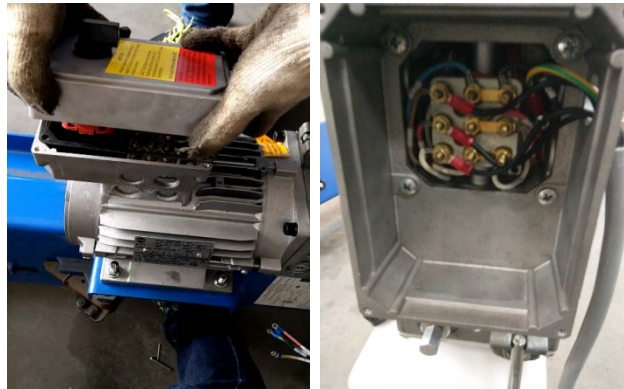


Fig 6: Motor Connection

If the customer still keeps the plastic black control box originally with the motor, they can take down the whole aluminum box and mount it inside the motor. If not, they can still mount the AI box cover back without any additional connection shown in Fig 7.



Fig 7: Cover Box

4. **Proximity Switch connection**

***For N432, metal box with contactor inside:*** Disconnect the proximity wires and take the contactor out from the black metal box. Connect the 2 cores wire which comes out from the GB control box to the contactor, with the method shown in Fig 8.

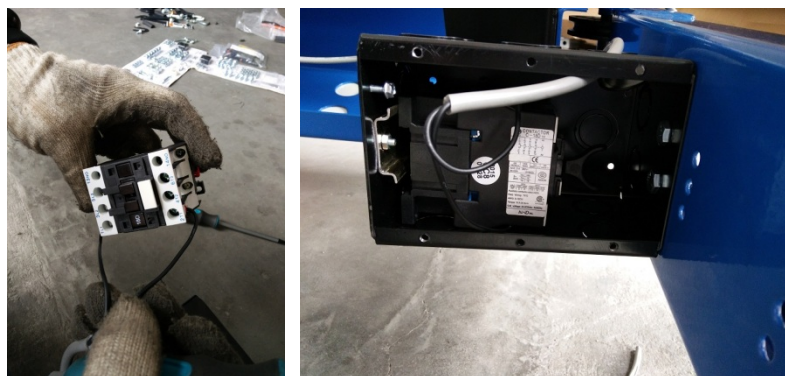


Fig 8: Proximity Switch Connection

5. **Total Connection:** After the total connection, the whole layout will be like below:



Fig 9: Total Connection

If you have any questions, please feel free to contact customer service at 86-513-81261262.

Sincerely,  
Louis Huang  
Technical Support Engineer  
2016/6/6